

(iii) Procedure followed in the decision making process, including channels of supervision and accountability.

The figure 1 and 2 below show organizational structure of Veer Narmad South Gujarat University which shows the channel of submission, supervision and accountability. Decision making process comprises following channel as shows in figure 1 and 2 from bottom to top. The decision taken by the competent authority / body in accordance with the prevailing Act, Statutes, Ordinances, and Regulations is conveyed to concern applicant/institution.

Figure-1 : Administrative Wing

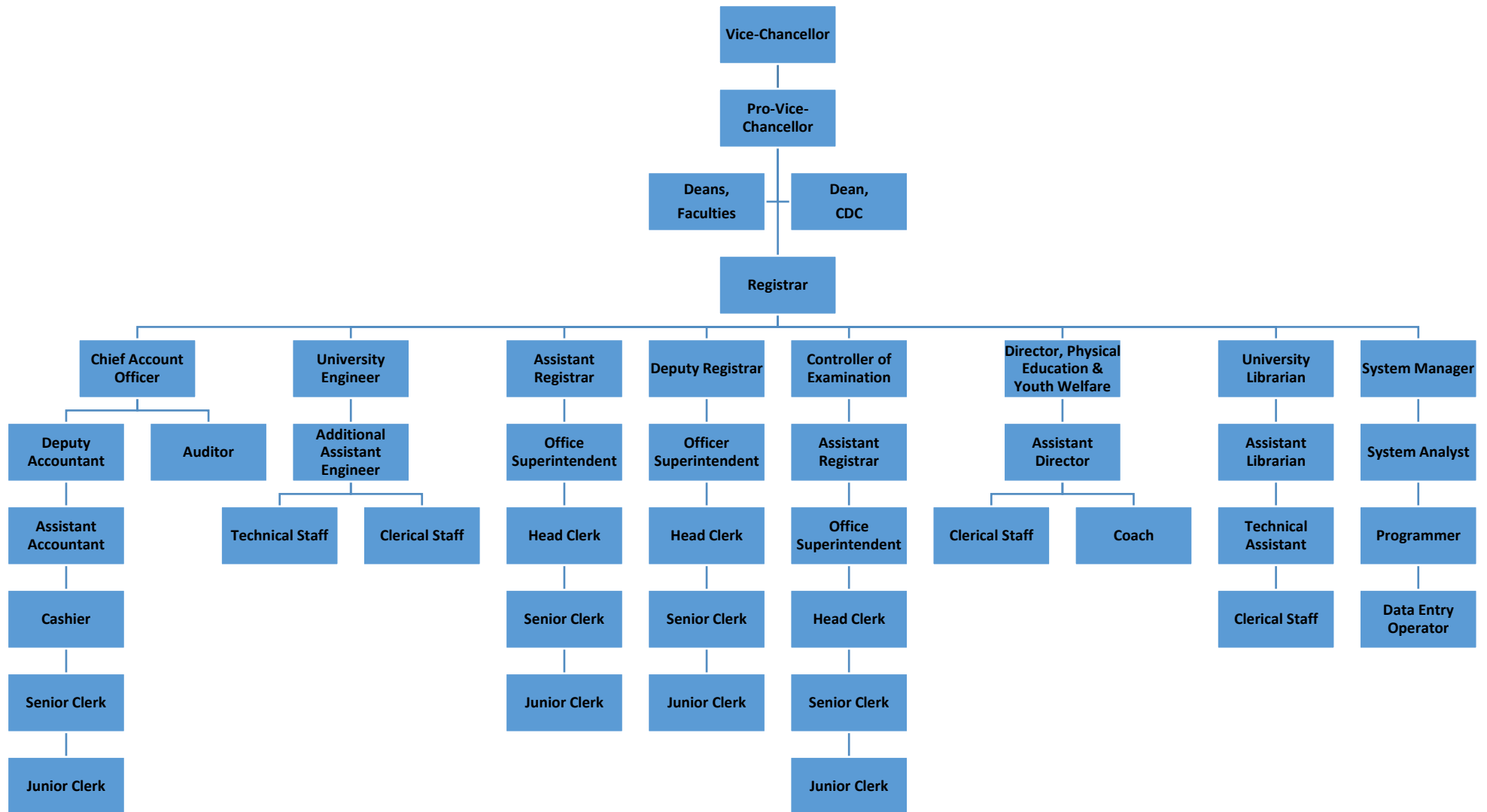


Figure-2 : Academic wing

